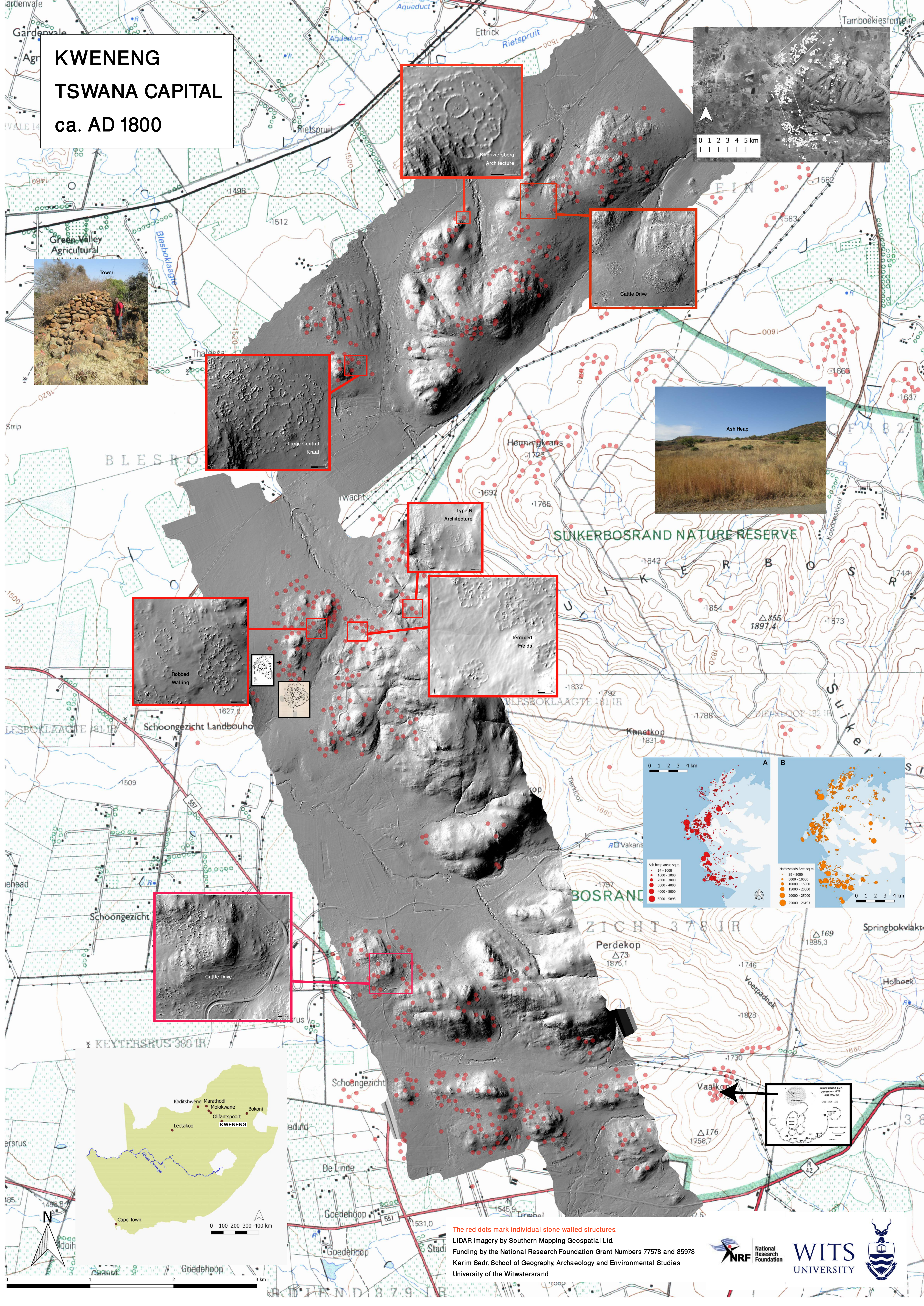


KWENENG TSWANA CAPITAL ca. AD 1800



The red dots mark individual stone walled structures.
 LiDAR Imagery by Southern Mapping Geospatial Ltd.
 Funding by the National Research Foundation Grant Numbers 77578 and 85978
 Karim Sadr, School of Geography, Archaeology and Environmental Studies
 University of the Witwatersrand

